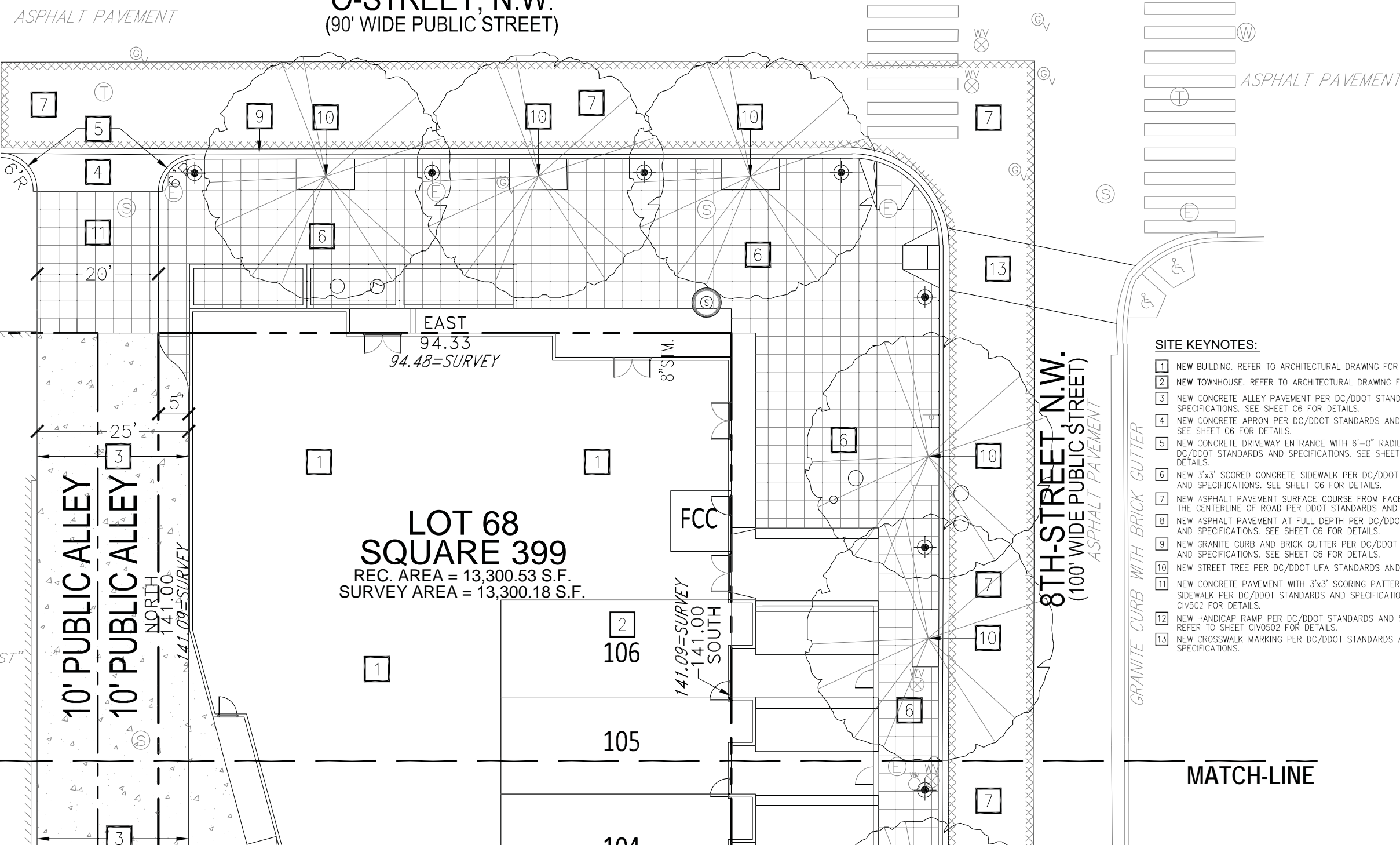


O-STREET, N.W.
(90' WIDE PUBLIC STREET)



SITE KEYNOTES:

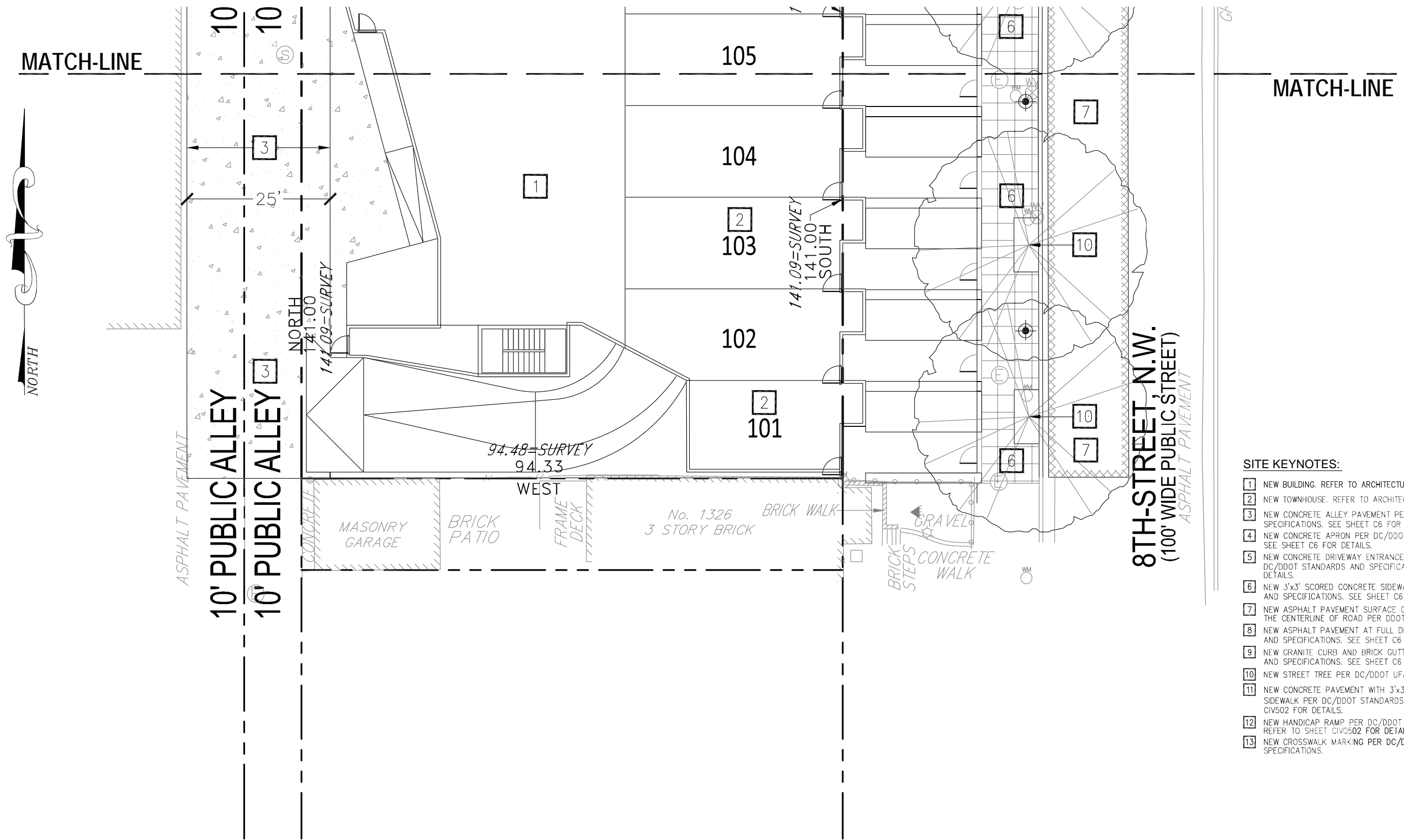
- 1 NEW BUILDING. REFER TO ARCHITECTURAL DRAWING FOR DETAILS.
- 2 NEW TOWNHOUSE. REFER TO ARCHITECTURAL DRAWING FOR DETAILS.
- 3 NEW CONCRETE ALLEY PAVEMENT PER DC/DDOT STANDARDS AND SPECIFICATIONS. SEE SHEET C6 FOR DETAILS.
- 4 NEW CONCRETE APRON PER DC/DDOT STANDARDS AND SPECIFICATIONS. SEE SHEET C6 FOR DETAILS.
- 5 NEW CONCRETE DRIVEWAY ENTRANCE WITH 6'-0" RADIUS PER DC/DDOT STANDARDS AND SPECIFICATIONS. SEE SHEET C6 FOR DETAILS.
- 6 NEW 3'x3' SCORED CONCRETE SIDEWALK PER DC/DDOT STANDARDS AND SPECIFICATIONS. SEE SHEET C6 FOR DETAILS.
- 7 NEW ASPHALT PAVEMENT SURFACE COURSE FROM FACE OF CURB TO THE CENTERLINE OF ROAD PER DDOT STANDARDS AND SPECIFICATIONS.
- 8 NEW ASPHALT PAVEMENT AT FULL DEPTH PER DC/DDOT STANDARDS AND SPECIFICATIONS. SEE SHEET C6 FOR DETAILS.
- 9 NEW GRANITE CURB AND BRICK GUTTER PER DC/DDOT STANDARDS AND SPECIFICATIONS. SEE SHEET C6 FOR DETAILS.
- 10 NEW STREET TREE PER DC/DDOT UFA STANDARDS AND SPECIFICATIONS.
- 11 NEW CONCRETE PAVEMENT WITH 3'x3' SCORING PATTERN TO MATCH SIDEWALK PER DC/DDOT STANDARDS AND SPECIFICATIONS. SEE SHEET CIV502 FOR DETAILS.
- 12 NEW HANDICAP RAMP PER DC/DDOT STANDARDS AND SPECIFICATIONS. REFER TO SHEET CIV0502 FOR DETAILS.
- 13 NEW CROSSWALK MARKING PER DC/DDOT STANDARDS AND SPECIFICATIONS.

LOT 66
No. 810
BRICK CHURCH
"SCRIPTURE CHURCH OF CHRIST"

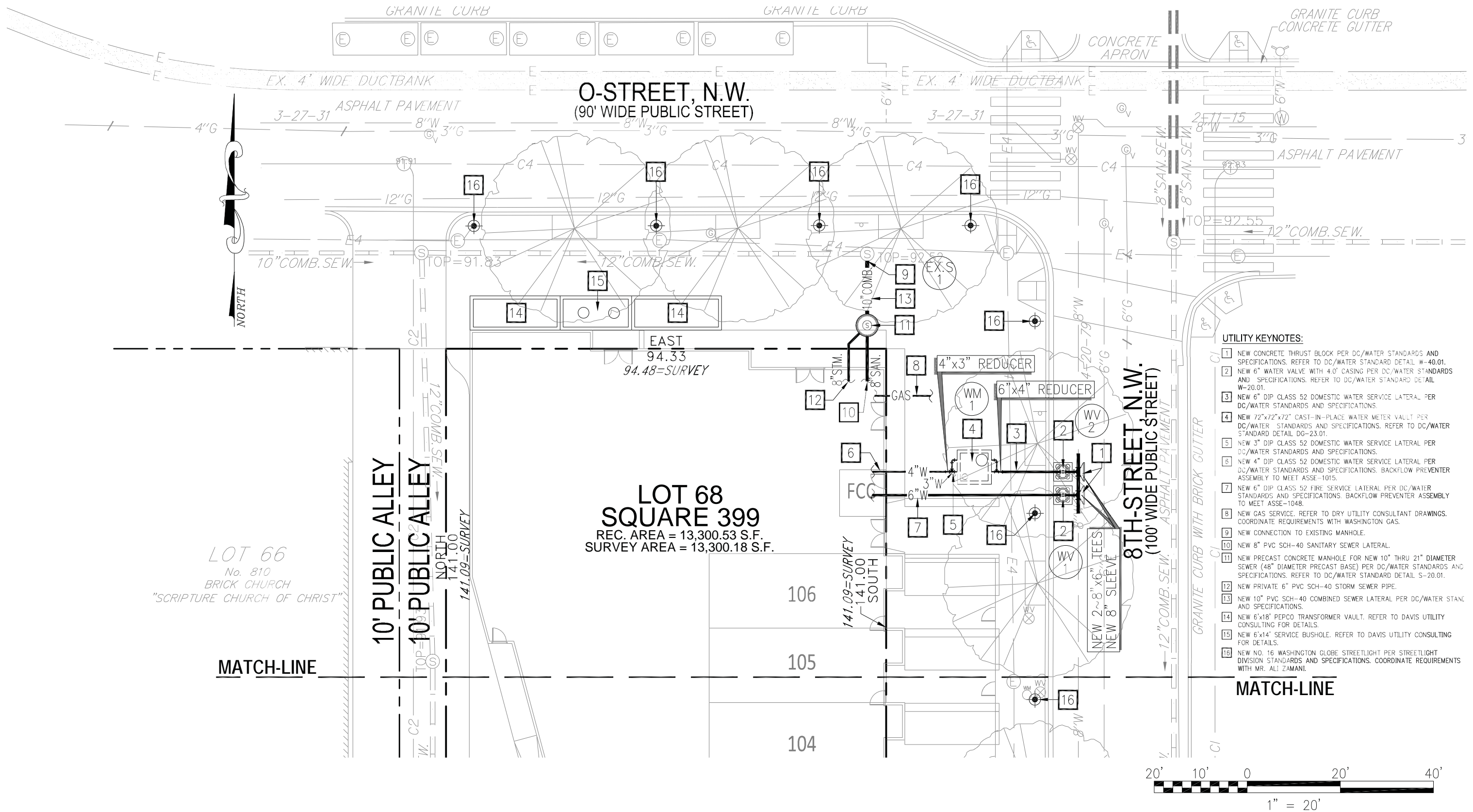
**LOT 68
SQUARE 399**
REC. AREA = 13,300.53 S.F.
SURVEY AREA = 13,300.18 S.F.

MATCH-LINE

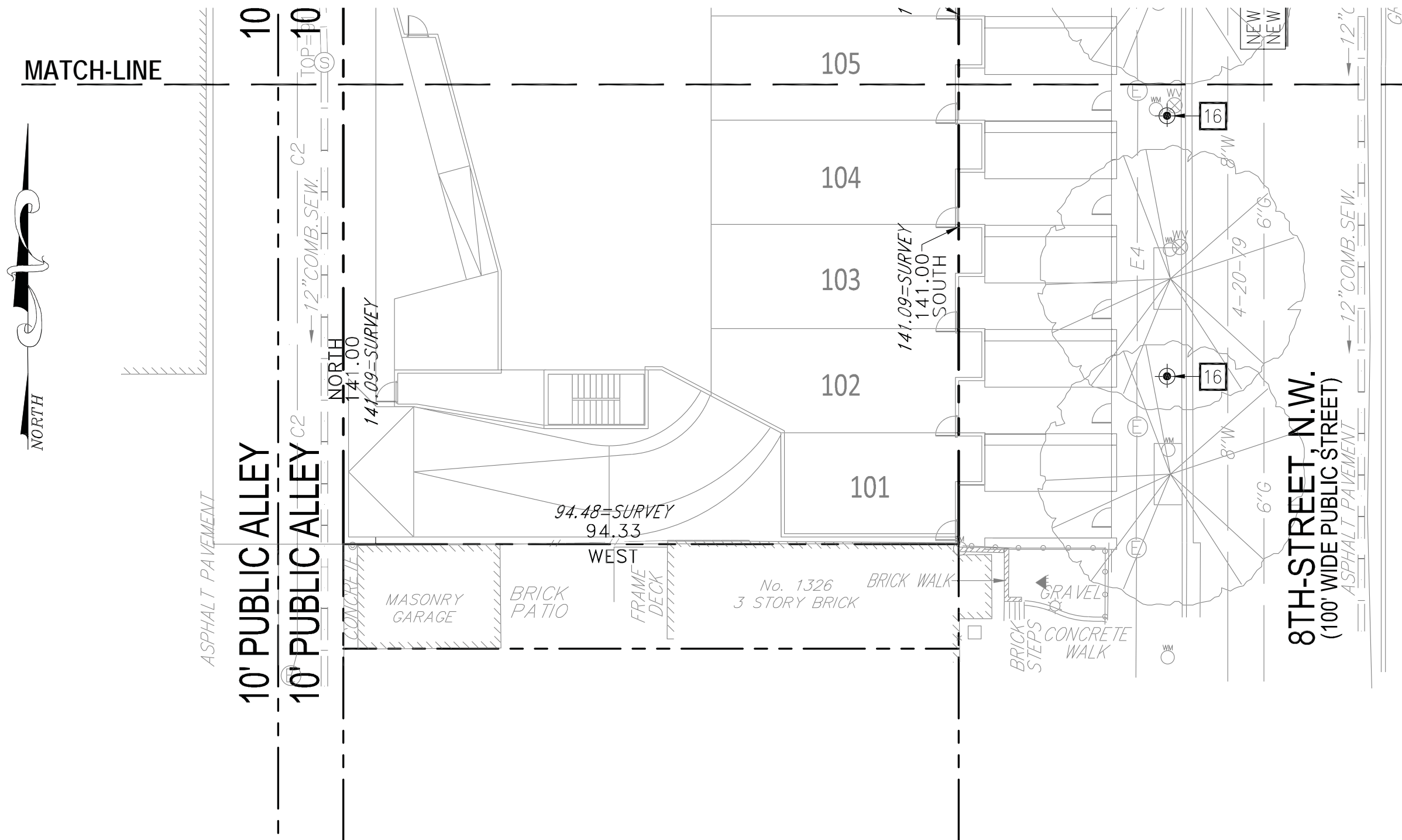
MATCH-LINE



- SITE KEYNOTES:**
- 1 NEW BUILDING. REFER TO ARCHITECTURAL DRAWING FOR DETAILS.
 - 2 NEW TOWNHOUSE. REFER TO ARCHITECTURAL DRAWING FOR DETAILS.
 - 3 NEW CONCRETE ALLEY PAVEMENT PER DC/DDOT STANDARDS AND SPECIFICATIONS. SEE SHEET C6 FOR DETAILS.
 - 4 NEW CONCRETE APRON PER DC/DDOT STANDARDS AND SPECIFICATIONS. SEE SHEET C6 FOR DETAILS.
 - 5 NEW CONCRETE DRIVEWAY ENTRANCE WITH 8'-0" RADIUS PER DC/DDOT STANDARDS AND SPECIFICATIONS. SEE SHEET C6 FOR DETAILS.
 - 6 NEW 3'x3' SCORED CONCRETE SIDEWALK PER DC/DDOT STANDARDS AND SPECIFICATIONS. SEE SHEET C6 FOR DETAILS.
 - 7 NEW ASPHALT PAVEMENT SURFACE COURSE FROM FACE OF CURB TO THE CENTERLINE OF ROAD PER DDOT STANDARDS AND SPECIFICATIONS.
 - 8 NEW ASPHALT PAVEMENT AT FULL DEPTH PER DC/DDOT STANDARDS AND SPECIFICATIONS. SEE SHEET C6 FOR DETAILS.
 - 9 NEW GRANITE CURB AND BRICK GUTTER PER DC/DDOT STANDARDS AND SPECIFICATIONS. SEE SHEET C6 FOR DETAILS.
 - 10 NEW STREET TREE PER DC/DDOT UFA STANDARDS AND SPECIFICATIONS.
 - 11 NEW CONCRETE PAVEMENT WITH 3'x3' SCORING PATTERN TO MATCH SIDEWALK PER DC/DDOT STANDARDS AND SPECIFICATIONS. SEE SHEET CIV502 FOR DETAILS.
 - 12 NEW HANDICAP RAMP PER DC/DDOT STANDARDS AND SPECIFICATIONS. REFER TO SHEET CIV0502 FOR DETAILS.
 - 13 NEW CROSSWALK MARKING PER DC/DDOT STANDARDS AND SPECIFICATIONS.



- UTILITY KEYNOTES:**
- 1 NEW CONCRETE THRUST BLOCK PER DC/WATER STANDARDS AND SPECIFICATIONS. REFER TO DC/WATER STANDARD DETAIL W-40.01.
 - 2 NEW 6" WATER VALVE WITH 4.0' CASING PER DC/WATER STANDARDS AND SPECIFICATIONS. REFER TO DC/WATER STANDARD DETAIL W-20.01.
 - 3 NEW 6" DIP CLASS 52 DOMESTIC WATER SERVICE LATERAL PER DC/WATER STANDARDS AND SPECIFICATIONS.
 - 4 NEW 72"x72"x72" CAST-IN-PLACE WATER METER VAULT PER DC/WATER STANDARDS AND SPECIFICATIONS. REFER TO DC/WATER STANDARD DETAIL D6-23.01.
 - 5 NEW 3" DIP CLASS 52 DOMESTIC WATER SERVICE LATERAL PER DC/WATER STANDARDS AND SPECIFICATIONS.
 - 6 NEW 4" DIP CLASS 52 DOMESTIC WATER SERVICE LATERAL PER DC/WATER STANDARDS AND SPECIFICATIONS. BACKFLOW PREVENTER ASSEMBLY TO MEET ASSE-1015.
 - 7 NEW 6" DIP CLASS 52 FIRE SERVICE LATERAL PER DC/WATER STANDARDS AND SPECIFICATIONS. BACKFLOW PREVENTER ASSEMBLY TO MEET ASSE-1048.
 - 8 NEW GAS SERVICE. REFER TO DRY UTILITY CONSULTANT DRAWINGS. COORDINATE REQUIREMENTS WITH WASHINGTON GAS.
 - 9 NEW CONNECTION TO EXISTING MANHOLE.
 - 10 NEW 8" PVC SCH-40 SANITARY SEWER LATERAL.
 - 11 NEW PRECAST CONCRETE MANHOLE FOR NEW 10" THRU 21" DIAMETER SEWER (48" DIAMETER PRECAST BASE) PER DC/WATER STANDARDS AND SPECIFICATIONS. REFER TO DC/WATER STANDARD DETAIL S-20.01.
 - 12 NEW PRIVATE 6" PVC SCH-40 STORM SEWER PIPE.
 - 13 NEW 10" PVC SCH-40 COMBINED SEWER LATERAL PER DC/WATER STANDARDS AND SPECIFICATIONS.
 - 14 NEW 6'x18" PEPCO TRANSFORMER VAULT. REFER TO DAVIS UTILITY CONSULTING FOR DETAILS.
 - 15 NEW 6'x14" SERVICE BUSHOLE. REFER TO DAVIS UTILITY CONSULTING FOR DETAILS.
 - 16 NEW NO. 16 WASHINGTON GLOBE STREETLIGHT PER STREETLIGHT DIVISION STANDARDS AND SPECIFICATIONS. COORDINATE REQUIREMENTS WITH MR. ALI ZAMANI.



UTILITY KEYNOTES:

- 1 NEW CONCRETE THRUST BLOCK PER DC/WATER STANDARDS AND SPECIFICATIONS. REFER TO DC/WATER STANDARD DETAIL W-40.01.
- 2 NEW 6" WATER VALVE WITH 4.0' CASING PER DC/WATER STANDARDS AND SPECIFICATIONS. REFER TO DC/WATER STANDARD DETAIL W-20.01.
- 3 NEW 6" DIP CLASS 52 DOMESTIC WATER SERVICE LATERAL PER DC/WATER STANDARDS AND SPECIFICATIONS.
- 4 NEW 72"x72"x72" CAST-IN-PLACE WATER METER VAULT PER DC/WATER STANDARDS AND SPECIFICATIONS. REFER TO DC/WATER STANDARD DETAIL DG-23.01.
- 5 NEW 3" DIP CLASS 52 DOMESTIC WATER SERVICE LATERAL PER DC/WATER STANDARDS AND SPECIFICATIONS.
- 6 NEW 4" DIP CLASS 52 DOMESTIC WATER SERVICE LATERAL PER DC/WATER STANDARDS AND SPECIFICATIONS. BACKFLOW PREVENTER ASSEMBLY TO MEET ASSE-1015.
- 7 NEW 6" DIP CLASS 52 FIRE SERVICE LATERAL PER DC/WATER STANDARDS AND SPECIFICATIONS. BACKFLOW PREVENTER ASSEMBLY TO MEET ASSE-1048.
- 8 NEW GAS SERVICE. REFER TO DRY UTILITY CONSULTANT DRAWINGS. COORDINATE REQUIREMENTS WITH WASHINGTON GAS.
- 9 NEW CONNECTION TO EXISTING MANHOLE.
- 10 NEW 8" PVC SCH-40 SANITARY SEWER LATERAL.
- 11 NEW PRECAST CONCRETE MANHOLE FOR NEW 10" THRU 21" DIAMETER SEWER (48" DIAMETER PRECAST BASE) PER DC/WATER STANDARDS AND SPECIFICATIONS. REFER TO DC/WATER STANDARD DETAIL S-20.01.
- 12 NEW PRIVATE 6" PVC SCH-40 STORM SEWER PIPE.
- 13 NEW 10" PVC SCH-40 COMBINED SEWER LATERAL PER DC/WATER STANDARDS AND SPECIFICATIONS.
- 14 NEW 6'x18" PEPCO TRANSFORMER VAULT. REFER TO DAVIS UTILITY CONSULTING FOR DETAILS.
- 15 NEW 6'x14" SERVICE BUSHOLE. REFER TO DAVIS UTILITY CONSULTING FOR DETAILS.
- 16 NEW NO. 16 WASHINGTON GLOBE STREETLIGHT PER STREETLIGHT DIVISION STANDARDS AND SPECIFICATIONS. COORDINATE REQUIREMENTS WITH MR. ALI ZAMANI.